

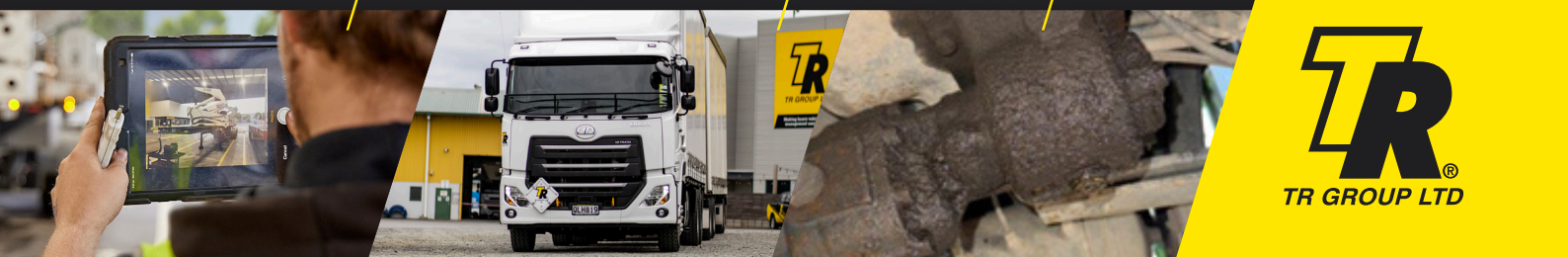
# NMOL DEHIRE GUIDE



DEHIRE PROCESS

APPRAISAL CRITERIA

STANDARDS



**TR**  
TR GROUP LTD

CONTACT OUR TEAM TODAY



0800 50 40 50



[www.trgroup.co.nz](http://www.trgroup.co.nz)



# NMOL Dehire Process

A non-maintained vehicle and mechanical appraisal will be carried out at the end of the lease by an independent workshop to assess the truck's condition to determine any excessive wear and tear or damage.

The appraisal typically follows industry standards for wear and tear and evaluates both cosmetic and mechanical aspects.

Fair wear and tear is measured by components being within manufacturer's wear limits and being at a standard to obtain a COF. For non-COF related defects, the vehicle's age and mileage is taken into account.

TR Group assesses any defects found with a view of only repairing what is fair and reasonable for the vehicle's age and mileage, we also look at more cost-effective repair options where appropriate.



# Appraisal Criteria



## Cab

- Cab external condition checked for damage including loose, damaged, or missing panels.
- Corrosion that would result in a COF failure is also checked for.
- All instruments and gauges should be present and working correctly.
- Interior lights including dash and gauge lights to be in full working order.
- Seats and seat belts operating correctly and at COF standard.
- Steering wheel buttons present and working, steering wheel at COF standard.
- Gear linkages working correctly and no excessive wear affecting operation.
- Pedals function correctly and rubbers are intact and at COF standard.



Missing/damaged switches



Expected wear and tear for age



Fair wear & tear



Damage



## Electrical

- A download to be carried out to ensure all systems operational and clear of fault codes.
- All lights and reflectors present and in working condition.
- Lenses are at COF standard free of cracks and damage.
- Wiring is fastened and secured.
- Trailer electrical plugs present and in working condition.



Faults on dash



Connections & plugs broken or worn out



## Air Conditioning Systems

- AC system is fully functional on hot and cold.
- Blower motor and vents fully functional.
- Hoses in good condition and secured.





## Engine

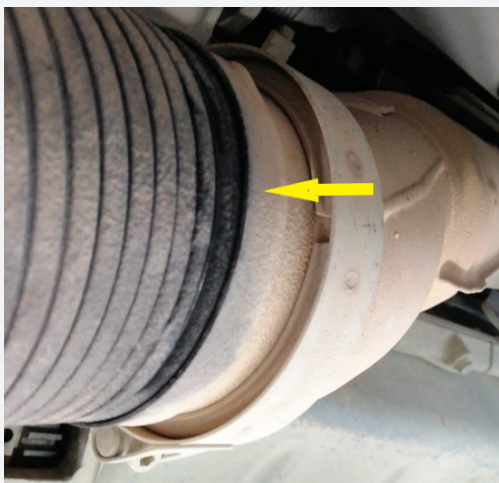
- All hoses, pipes and lines in good condition and not leaking.
- Drive belts and tensioners in acceptable condition with no abnormal noises.
- There are no oil, fuel and coolant leaks.
- Cooling system in clean condition with correct antifreeze levels.
- Engine Oil level and condition.
- All other fluids such as clutch, power steering etc to be at acceptable levels
- Other components or accessories to be free from leaks
- Manifolds free from leaks, cracks.
- All DPD/DPF/AdBlue SCR systems operational.
- All functions are working correctly, engine brakes etc.
- Engine wear / blowby at an acceptable level – no excessive breathing or fumes out of crankcase.



Engine oil leak requiring repair



Slight mist acceptable for age & mileage



Leaking exhaust pipe requiring replacement



Corrosion in cooling system due to lack of maintenance



## Driveline

- No oil or fluid leaks that drip or that would affect COF.
- Mounts not cracked, perished and at a COF standard.
- Universal joints within manufacturer's wear limits.
- Driveshaft including hanger bearing.
- Broken, damaged missing components.
- Transmission functioning correctly free from abnormal noises, harsh engagements etc.
- Clutch operating correctly with a minimum of 20% remaining.



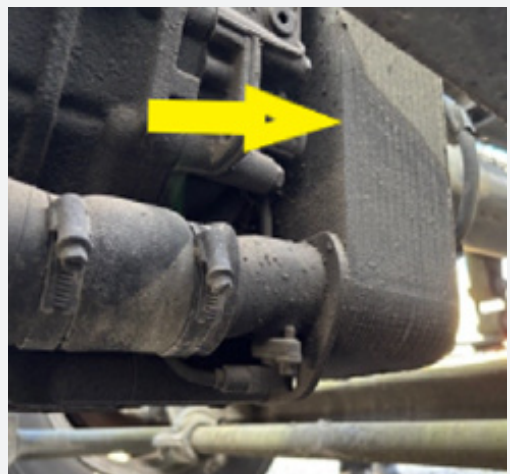
Diff oil leak requiring repair



Diff mist deemed acceptable for age & mileage



Transmission oil leak requiring repair



Minor transmission leak acceptable for age



## Steering and Suspension

**These must be within manufacturer's wear limits and COF standards.**

**Checks to include:**

- Steering column including universal joint
- Steering box (no leaks, secure etc)
- Steering components (tie rods, drag links)
- Spring pins and hangers
- Shock absorbers for leaks, bushes for wear
- Trailing arm bush condition
- Spring/trailing arms condition
- Spring slipper/rocker condition
- All bushes for wear
- U bolts correct torque
- Airbags have no leaks or splits in the rubber
- Airbag levelling valve/correct ride height
- Steer axle operation
- Steer axle bellows



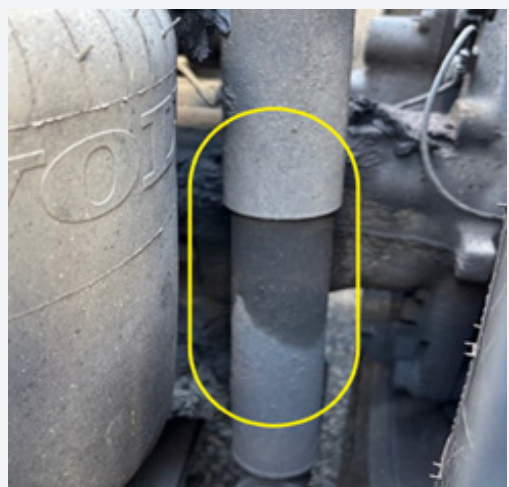
Excessive cracking on air bag



Minor cracking on air bag expected for age



Leaking shock requiring replacement



Misting shock expected for age

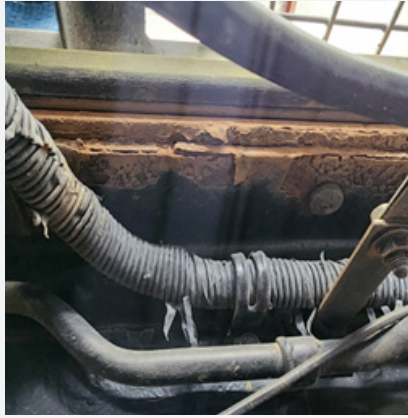




## Chassis

**This must be within COF standards.**

- No excessive corrosion and at COF standard
- No structural cracking or cracking that would affect COF
- Missing bolts or rivets
- No unapproved chassis modifications



Excessive corrosion



Acceptable corrosion for age



## Air System and Brakes

**Brakes must be within manufacturer's wear limits and COF standards.**

- Free from air leaks with brakes applied / unapplied.
- Brake operation up to COF standard – less than 30% imbalance.
- Hoses secure and in good condition.
- Minimum of 20% remaining on wearable brake components eg linings, drums, rotors, pads.
- Wheel bearings to spin without abnormal noises and play.
- EBS/ABS systems functioning correctly.



Worn out brake pads



Cracked and perished brake hose





## Body

- The body will be checked for damages caused by operator damage and or neglect.
- No excessive cracks or corrosion that would affect getting a COF.
- Torn or damaged curtains and ratches.
- Doors, door seals, hinges and handles are present and operating correctly.
- Mezz floor, straps, props all present and in a working condition.
- Roof has support poles present with no holes and cracks that affect COF.
- Tail lift operates and is free from damages, oil leaks.
- Mud guards are in a COF condition.



Excessively worn tipper bin



Expected bin condition for age & mileage



Excessively worn door seals



Expected door seals for age & mileage



Worn & rotten deck planks with gaps

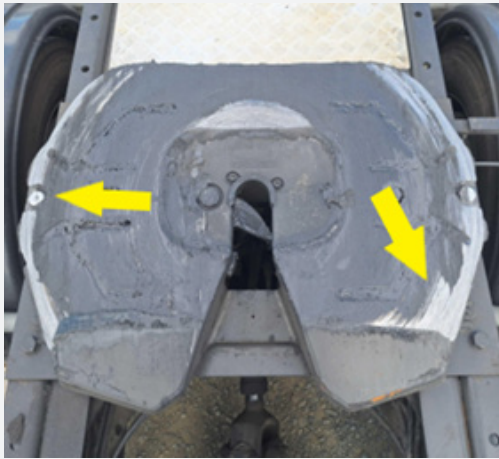


Fair wear and tear for age & mileage



## Towing Connections

- Fifth wheels to be operational and in COF condition within manufacturer's maximum wear limits.
- Ringfeeders to be operational and in COF condition within manufacturer's maximum wear limits.
- Skid plates within maximum wear limits and in COF condition as per 4085B inspection.
- Draw beams with current certification and free from damage.
- Draw bars and tow eyes within maximum wear tolerances with current certification and free from damage.



Damaged fifth wheel from lack of maintenance



Fair wear and tear for age & mileage



Damaged coupling



Fair wear and tear for age & mileage





## Specialist Vehicles (Cranes, Sideloaders, EWP's)

### What is considered fair wear and tear:

- Minor surface scratches or scuffs on the exterior of the cylinder barrel.
- Normal wear on the boom and sliding extensions
- Similar wear on stabilizers and outriggers based on use and age
- Gradual wear on hydraulic seals, hoses & fittings
- Minor leak or sweating of hydraulic fluid from normal usage.
- Loss of paint or protective coatings on exposed metal surfaces, leading to minor surface rust.



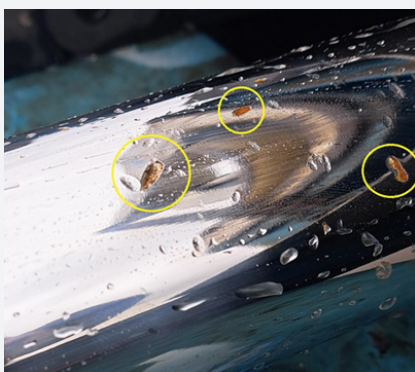
Minor misting on hydraulic hose



Oil misting from cylinder from normal usage

### What is considered excessive wear and damage:

- Large and deep scratches or scuffs on the exterior of the cylinder barrel.
- Excessive wear on the boom and sliding extensions, wear pads less than 20% remaining.
- Excessive wear on stabilizers and outriggers
- Leaking hydraulic seals, hoses & fittings
- Major leaks of hydraulic fluid from normal usage.
- Damage to spheres or cylinders that will cause damage to cylinder seals & cause leaks.



Chain dents to cylinder sphere



Major cylinder oil leak dripping oil



Leaking hydraulic hose



## Cab and Paint Work

- Stone chipping resulting in visible dents.
- Exterior panel damage caused by impact with objects resulting in visible dents.
- Scratches etc. which have dented panel surface and cannot be removed by polishing.
- Bent or broken bumpers, steps and tanks.
- Missing or damaged equipment.



Damage



Fair wear & tear



## Certifications

- Annual certifications need to be less than 1 month old. This includes (but is not limited to):
  - › Certificate of Fitness (COF)
  - › Crane certification
  - › Fridge calibration
- Curtain certs need to be current.
- Towing connections need to be current – draw beams, drawbars etc.





**TRUCKS & TRAILERS  
RENTAL & LEASE**

**Making heavy vehicle fleet  
management easy for you**



**DRIVER  
TRAINING**

**Supporting your fleet safety,  
efficiency and compliance**



**USED VEHICLE  
SALES**

**Ex lease and rental vehicles  
from our fleet to yours**

**trgroup.co.nz**